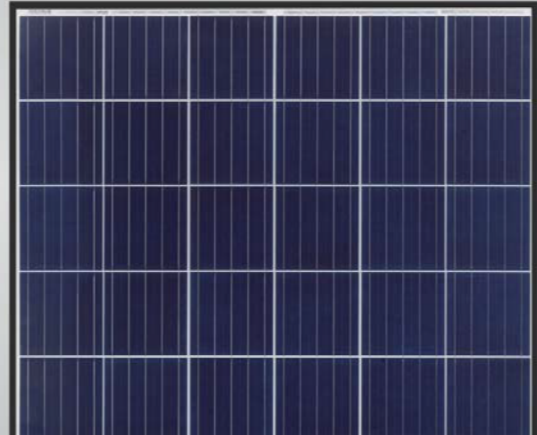


Eagle 60

260-280 Watt

POLYCRYSTALLINE MODULE

Positive power tolerance of 0~+3%



KEY FEATURES



Innovative Solar Cells

Five busbar polycrystalline cell technology improves module efficiency



PID Free

World's 1st PID Free module



Low-Light Performance

Advanced glass technology improves light absorption and retention



Strength and Durability

Certified for high snow (5400Pa) and wind (2400Pa) loads

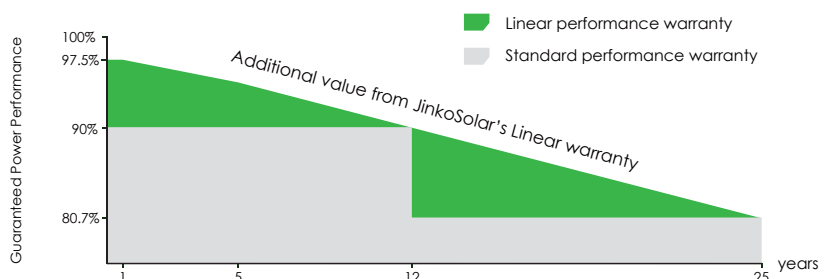


Weather Resistance

Certified for salt mist and ammonia resistance

LINEAR PERFORMANCE WARRANTY

10 Year Product Warranty • 25 Year Linear Power Warranty



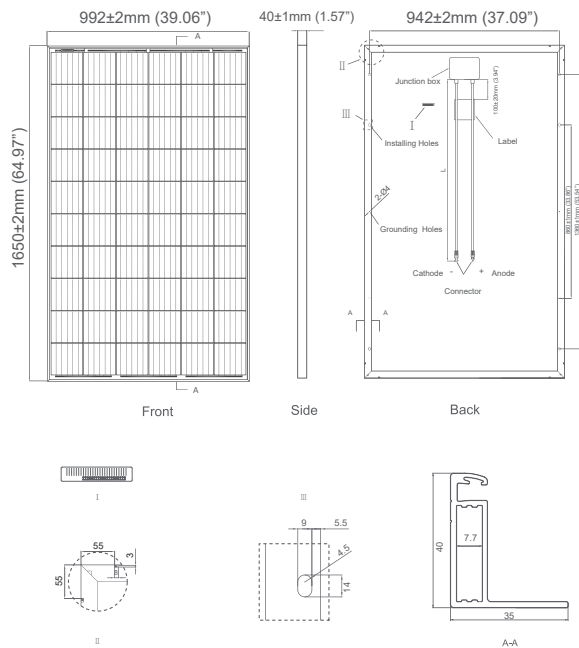
- ISO9001:2008 Quality Standards
- ISO14001:2004 Environmental Standards
- OHSAS18001 Occupational Health & Safety Standards

Nomenclature:

JKM280PP-60



Engineering Drawings

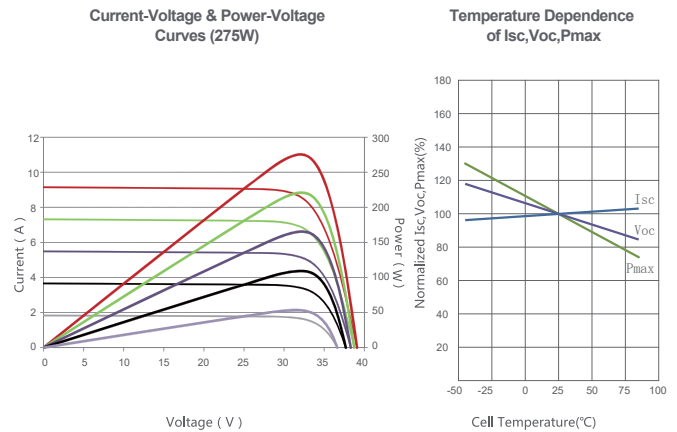


Packaging Configuration

(Two pallets=One stack)

26pcs/pallet, 52pcs/stack, 728 pcs/40'HQ Container

Electrical Performance & Temperature Dependence



Mechanical Characteristics

Cell Type	Polycrystalline 156×156mm (6 inch)
No. of Cells	60 (6×10)
Dimensions	1650×992×40mm (65.00×39.05×1.57 inch)
Weight	19.0 kg (41.9 lbs)
Front Glass	3.2mm, Anti-Reflection Coating, High Transmission, Low Iron, Tempered Glass
Frame	Anodized Aluminium Alloy (Black)
Junction Box	IP67 Rated
Output Cables	12 AWG, Length: 1000mm (39.37 inch)
Fire Type	Type 1

SPECIFICATIONS

Module Type	JKM260PP-60		JKM265PP-60		JKM270PP-60		JKM275PP-60		JKM280PP-60	
	STC	NOCT	STC	NOCT	STC	NOCT	STC	NOCT	STC	NOCT
Maximum Power (Pmax)	260Wp	193Wp	265Wp	197Wp	270Wp	200Wp	275Wp	204Wp	280Wp	208Wp
Maximum Power Voltage (Vmp)	31.1V	28.7V	31.4V	29.0V	31.7V	29.4V	32.0V	29.8V	32.3V	30.1V
Maximum Power Current (Imp)	8.37A	6.71A	8.44A	6.78A	8.52A	6.80A	8.61A	6.85A	8.69A	6.91A
Open-circuit Voltage (Voc)	38.1V	35.2V	38.6V	35.3V	38.8V	35.4V	39.1V	35.4V	39.4V	35.6V
Short-circuit Current (Isc)	8.98A	7.31A	9.03A	7.36A	9.09A	7.38A	9.15A	7.44A	9.20A	7.99A
Module Efficiency STC (%)	15.88%		16.19%		16.50%		16.80%		17.11%	
Operating Temperature (°C)	-40°C~+85°C									
Maximum System Voltage	1000VDC (UL and IEC)									
Maximum Series Fuse Rating	20A									
Power Tolerance	0~+3%									
Temperature Coefficients of Pmax	-0.40%/°C									
Temperature Coefficients of Voc	-0.31%/°C									
Temperature Coefficients of Isc	0.06%/°C									
Nominal Operating Cell Temperature (NOCT)	45±2°C									

*STC: Irradiance 1000W/m² Cell Temperature 25°C

AM=1.5

NOCT: Irradiance 800W/m² Ambient Temperature 20°C

AM=1.5

Wind Speed 1m/s

* Power measurement tolerance: ± 3%

CAUTION: READ SAFETY AND INSTALLATION INSTRUCTIONS BEFORE USING THE PRODUCT.

© Jinko Solar Co., Ltd. All rights reserved. Specifications included in this datasheet are subject to change without notice.
US-JKM-280PP-60_1.0_rev2018